



# SOBA EX

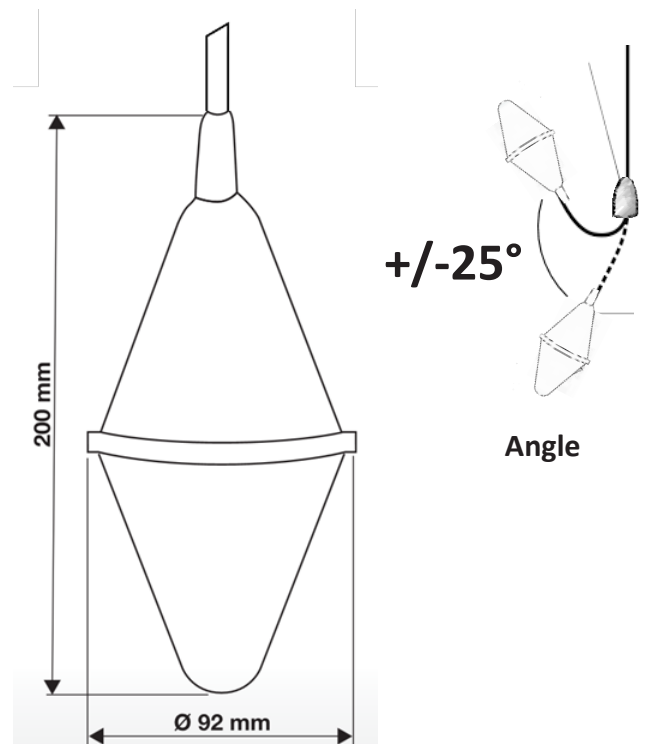


Security accessory

**- LEVEL REGULATOR ATEX CERTIFIED**  
For hazardous areas classified as 0,1,2 (Gas) and 20,21,22 (Dust)

Under the pressure of liquids, the tilting of the level float actuates a contact connected to a control cabinet, closing or opening the supply circuit of pumps or any other other control devices.

Allowed fluid densities	0,80 à 1,10 g/cm <sup>3</sup>
Electric characteristics	24 VCA /VCC 10 mA mini - 12 VCA /VCC 100 mA mini
Cut-out power	10 (4) A
Maximum pressure	4 bars
Maximum temperature	T6 : - 20°C - + 70°C
Protection index	IP 68
Housing	Copolymer polypropylene + HR HY
Type of cable	HR HY
Float weight without cable	300 g

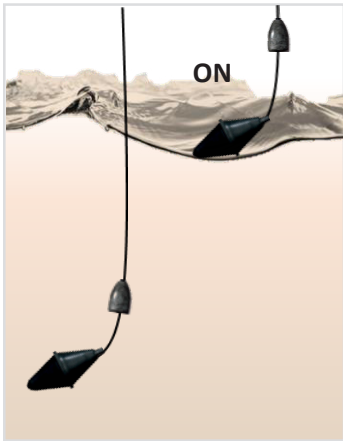


Dimension

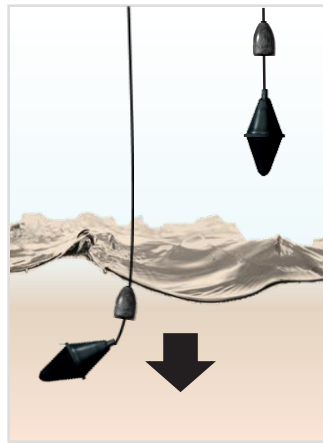
# OPERATION



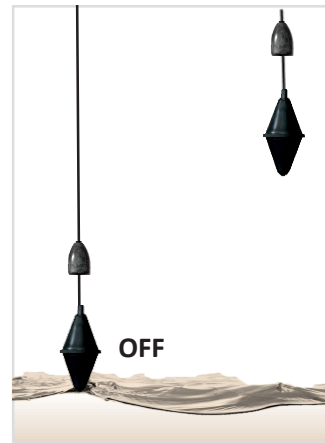
## EMPTYING



The liquid reaches the float which by tilting gives the signal to the pump to start for emptying



Pumping allows to empty the liquid

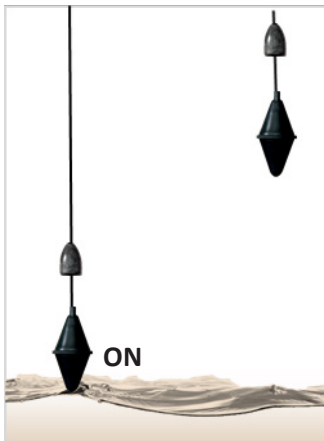


The pumping stops as soon as the low regulator returns to the vertical position

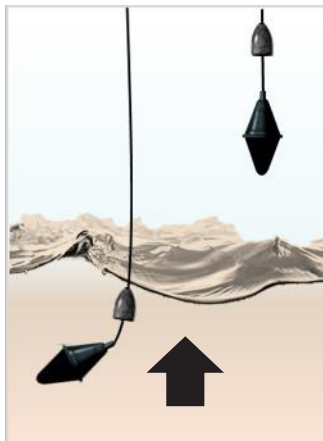


Connection

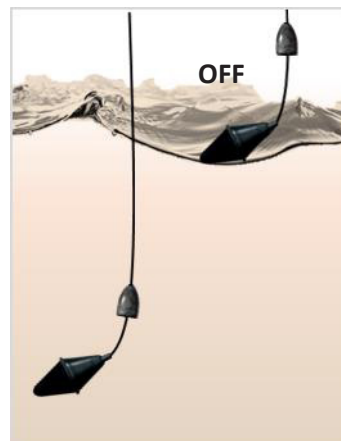
## FILLING



The filling starts as soon as the low regulator returns to the vertical position



The pump is used to fill the tank.



The filling stops as soon as the high level regulator switches



Connection