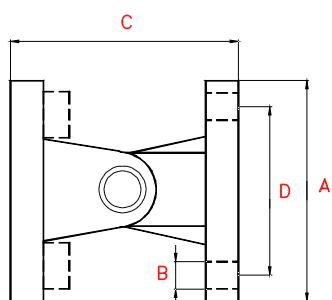




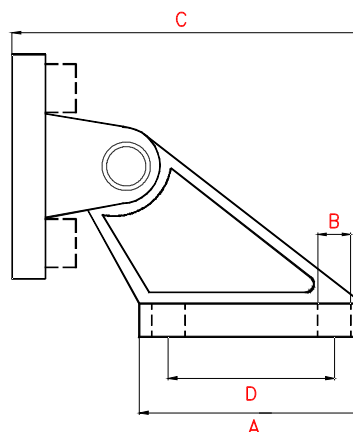
Bakre svängfäste till ställdon WV-111, WV-121

Rakt bakre svängfäste Typ WV-111- I



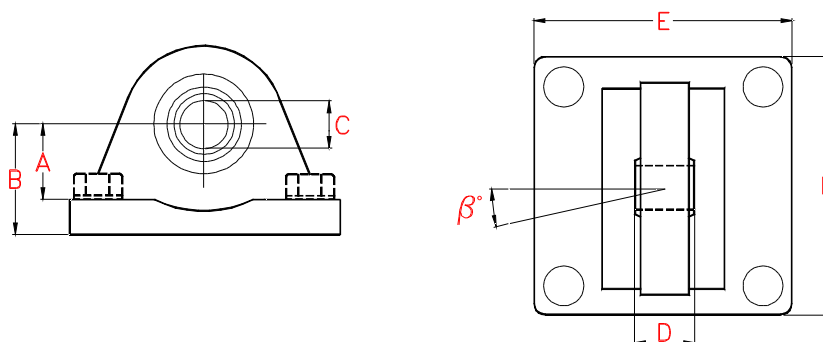
Cylinder diameter	A	B	C	D
80	90	11	72	72
100	110	11	82	89

Vinklat bakre svängfäste Typ WV-111- Z



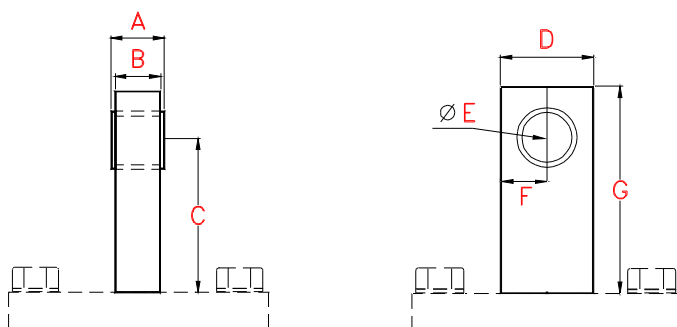
Cylinder diameter	A	B	C	D
80	90	11	235	75
100	110	11	256	90

Bakre kullefäste Typ WV-111-R



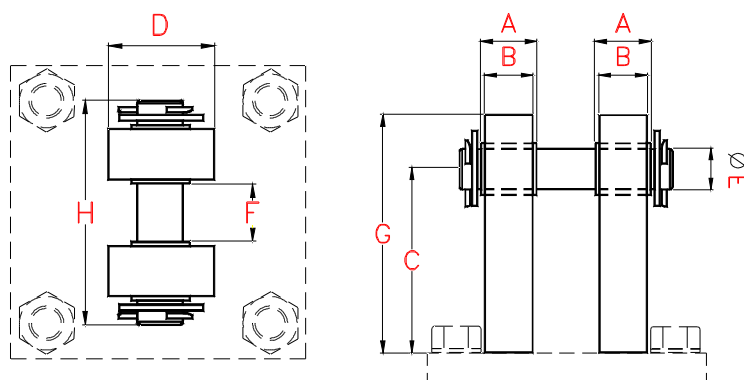
Cylinder diameter	A	B	C	D	E	β
80	24	36	16	21	90	15
100	29	41	20	25	110	15

Rakt bakre enkelt svängfäste Typ WV-111- 2



Cylinder diameter	A	B	C	D	ØE	F	G
80	22	20	55	40	20	20	75
100	22	20	55	40	20	20	75
140	37	35	75	70	20	35	100

Rakt bakre dubbelt svängfäste Typ WV-111- 3



Cylinder diameter	A	B	C	D	ØE	F	G	H
80	22	20	55	40	20	30	75	94
100	22	20	55	40	20	30	75	94
140	37	35	75	70	20	30	100	124