



DS 4 Pressure Switch for Pneumatics / Vacuum



- ▶ 1 or 2 contacts
- ▶ contacts freely configurable via adapter or programming device
- ▶ nominal pressure ranges from 0 ... 1 bar up to 0 ... 10 bar also -1 ... 0 bar

The electronic pressure switch DS 4 has been designed for pneumatics and vacuum applications.

Due to the materials aluminium for the pressure port and silicon for the pressure sensor the DS 4 is suited for use with gases or compressed air. The housing for the switching electronics is PA 6.6.

The new microcontroller switching electronics offers – besides standard functions – many additional features for optimal adaption to the measuring requirements.

One or two freely programmable contacts, whose status is indicated by differently coloured LED's, can be configured quickly and comfortable either by optionally available programming kit CIS-Set or via programming device P6.

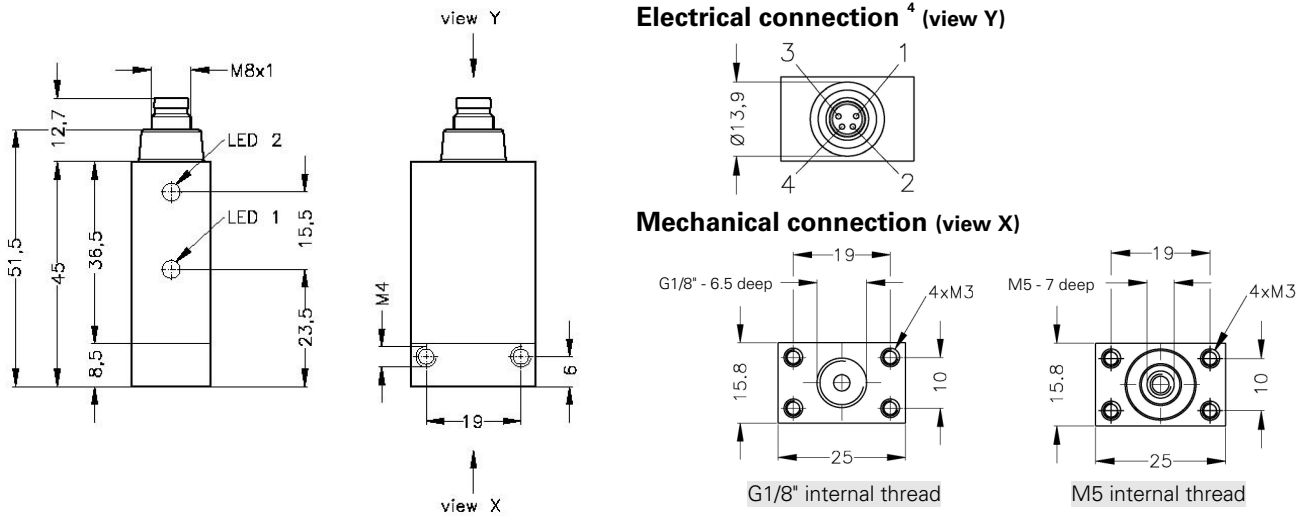
Preferred areas of use are:

- ▶ Pneumatics
- ▶ Vacuum applications

Characteristics	<ul style="list-style-type: none">▶ compact design▶ mechanical connection internal thread G1/8" or M5▶ electrical connection M8x1 4-pin▶ optional: analogue output (1 ... 5 V / 3-wire)▶ customer specific versions on request	DS 4 OEM Pressure Switch

TECHNICAL DATA

Dimensions



Materials

Pressure port	aluminium
Housing	PA 6.6 black
Seals	NBR
Sensor	silicon, RTV
Media wetted parts	pressure port, seals, sensor

Miscellaneous

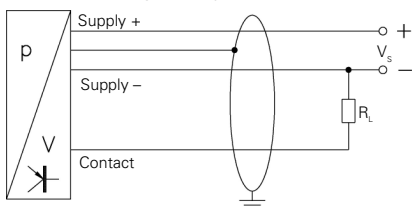
Media	compressed air, non-aggressive gases
Weight	approx. 25 to 35 g
Installation position	any
Ingress protection	IP 54

Pin configuration

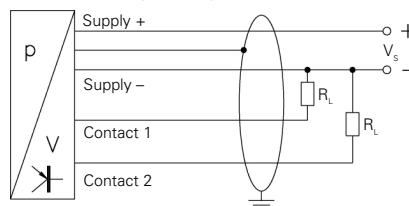
Electrical connection	M8x1 (4-pin) 1 contact	M8x1 (4-pin) 2 contacts	M8x1 (4-pin) 1 contact, 1 analogue output	cable colours ⁴ (DIN 47100)
Supply +	1	1	1	white
Supply -	3	3	3	brown
Signal +	-	-	2	green
Contact 1	4	4	4	grey
Contact 2	-	2	-	pink
Ground	-	-	-	cable shield

Wiring diagrams

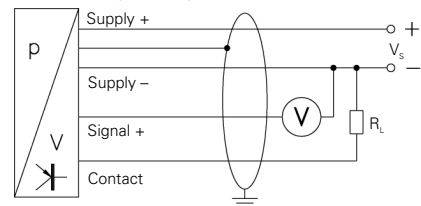
1 contact
(without analogue output)



2 contacts
(without analogue output)



1 contact
(with analogue output)



⁴ cable outlet on request

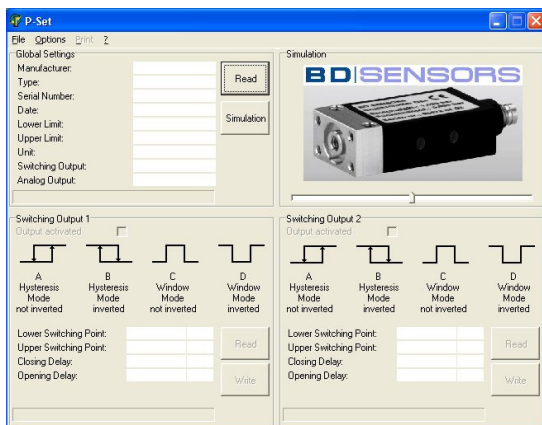
CONFIGURATION

The Pressure Switch can be configured via programming kit CIS Set and PC or via programming device P6. For example setting of following parameters is possible:

- ▶ switching mode (hysteresis or window mode)
- ▶ inversion of contact
- ▶ switch on / lower switching point
- ▶ switch off / upper switching point
- ▶ switch on / switch off delay

The programming adapter is part of the programming kit CIS Set containing also power supply, cable, and a CD-ROM with the configuration software P-Set.

All cables required for connecting the pressure switch have to be plugged to the programming adapter. The user only needs Windows® PC with serial interface.



Installation of configuration software P-Set is very easy. P-Set is running on all Windows® PC's (95, 98, ME, 2000, NT, XP). After software installation the adapter only has to be connected with the serial interface of the PC, the power supply, and the pressure switch. You can find more information on the software functions in the software manual.

Alternatively to programming via PC BD SENSORS offers the programming device P6. It is simply plugged between DS 4 and the female connector. Via two push-buttons and a 4-digit LED display all possible settings can be made.



Windows® is a registered trademark of Microsoft Corporation