



DS 200

Electronic pressure Switch with Stainless Steel Sensor



- ▶ 1 analogue output and up to 2 contacts
- ▶ display and housing rotatable
- ▶ nominal pressure ranges from 0 ... 100 mbar up to 0 ... 600 bar



The electronic pressure switch DS 200 is the successful combination of:

- precise pressure transmitter
- intelligent pressure switch
- digital display unit

Areas of application of the DS 200 range from pneumatics to hydraulics. It is suitable for a large variety of control applications – precise and stable in the long term. The DS 200 can be used with any gases or liquids compatible with stainless steel and the O-ring material.

Basic element is a piezoresistive stainless steel sensor. The system pressure is shown on the 4-digit LED display. In addition the display supports programming the DS 200 using the foil keys. Display and housing of the DS 200 are rotatable, so that the position of the display can be adapted to unusual installation positions.

Set and reset points are freely configurable in the range 0 to 100 % of the nominal pressure. The software has several functions such as access protection, configuration of the display and the contacts, etc.

Functions	<ul style="list-style-type: none">▶ configuration of display, including<ul style="list-style-type: none">- current value- decimal point▶ contacts adjustable, including<ul style="list-style-type: none">- switch on / switch off points- hysteresis / window mode- switch on / switch off delay▶ special functions / administration<ul style="list-style-type: none">- access protection- min. / max. value memory▶ option Ex-version (only for 4 ... 20 mA / 2-wire) TÜV 02 ATEX 1841	DS 200 Electronic Pressure Switch
	 	

TECHNICAL DATA

Input pressure range

Nominal pressure gauge [bar]	-1 ... 0	0.1	0.16	0.25	0.4	0.6	1	1.6	2.5	4	6	10	16	25	40
Nominal pressure abs. [bar]	-	0.1	0.16	0.25	0.4	0.6	1	1.6	2.5	4	6	10	16	25	40
Permissible overpressure [bar]	3	1	1	1	1	3	3	6	6	20	20	60	60	60	100
Nominal pressure gauge ¹ [bar]	60		100		160		250		400		600				
Nominal pressure abs. [bar]	60		100		160		250		400		600				
Permissible overpressure [bar]	140		340		340		600		600		1000				

Output signal / Supply

Analogue output		
Standard	2-wire: 4 ... 20 mA / $V_s = 18 \dots 41 V_{DC}$	Ex-protection: $V_s = 17 \dots 28 V_{DC}$
Optional	3-wire: 0 ... 10 V / $V_s = 15 \dots 36 V_{DC}$	4 ... 20 mA / $V_s = 19 \dots 30 V_{DC}$ (on request)
Accuracy	standard: nominal pressure > 0.4 bar: nominal pressure ≤ 0.4 bar: option: nominal pressure > 0.4 bar:	IEC 60770 ²
		BFSL
		≤ ± 0.35 % FSO ≤ ± 0.50 % FSO ≤ ± 0.25 % FSO
Permissible load	current 2-wire: $R_{max} = [(V_s - V_{smin}) / 0.02] \Omega$ voltage 3-wire: $R_{min} = 10 k\Omega$	
Response time	< 5 msec ³	
Contact^{4,5}		
Number, type	1 or 2 independent PNP contacts	
Switching current	standard: contact rating max. 125 mA, short-circuit resistant Ex-protection: max. switching current ⁶ : 70 mA; max. permissible inductivity: 4.7 mH	
Accuracy of contacts	standard: nominal pressure > 0.4 bar: nominal pressure ≤ 0.4 bar: option: nominal pressure > 0.4 bar:	IEC 60770 ²
		BFSL
		≤ ± 0.35 % FSO ≤ ± 0.50 % FSO ≤ ± 0.25 % FSO
Repeatability	≤ ± 0.1 % FSO	
Switching frequency	max. 10 Hz	
Switching cycles	> 100 x 10 ⁶	
Delay time	0 ... 100 sec	

Thermal errors (Offset and Span)

Nominal pressure P_N [bar]	-1 ... 0	≤ 0.1	≤ 0.25	≤ 0.4	≤ 1.0	> 1.0
Tolerance band [% FSO]	≤ ± 0.75	≤ ± 2	≤ ± 1.5	≤ ± 1	≤ ± 1	≤ ± 0.75
TC, average [% FSO / 10 K]	± 0.07	± 0.3	± 0.2	± 0.14	± 0.1	± 0.07
in compensated range [°C]	0 ... 70		0 ... 50		0 ... 70	

Electrical protection

Short-circuit protection	permanent
Reverse polarity protection	no damage, but also no function
Electromagnetic compatibility	emission and immunity according to EN 61326
Option Ex-protection only with 4 ... 20 mA / 2-wire AX11-DS 200	zone (0) 1: II (1) 2 G EEx ia IIC T4 safety technical maximum values: $V_i = 28 V$, $\Sigma I_i = 93 mA$, $\Sigma P_i = 660 mW$

Display

Type	4-digit, red LED display, digit height 7 mm, digit width 4.85 mm (angle 10°)
Range	-1999 ... +9999
Accuracy	0.1 % ± 1 digit
Digital damping	0.3 ... 30 sec (programmable)
Measured value update	0.0 ... 10 sec (programmable)

¹ measurement starts with ambient pressure

² accuracy according to IEC 60770 – limit point adjustment (non-linearity, hysteresis, repeatability)

³ with 3-wire version 4 ... 20 mA the response time is 1 sec

⁴ with connector DIN 43650 and output 4 ... 20 mA / 2-wire max. 1 contact possible; with 0 ... 10 V / 3-wire no contact possible

⁵ with Ex-protection max. 1 contact possible

⁶ the real switching current in the application depends on the power supply unit

TECHNICAL DATA

Mechanical stability

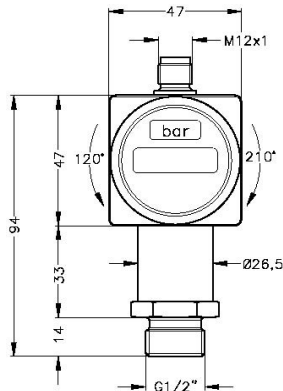
Vibration	5 g RMS (20 ... 2000 Hz)
Shock	100 g / 11 msec

Permissible temperatures

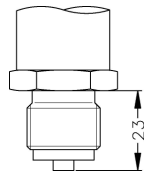
Medium	-25 ... 125 °C	
Electronics / environment	-25 ... 85 °C	Ex-protection: -25 ... 70 °C
Storage	-40 ... 85 °C	

Mechanical connection

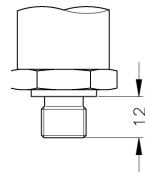
Standard



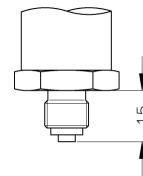
Optional



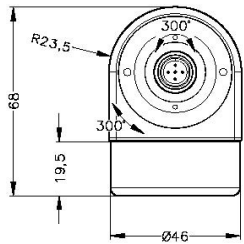
G1/2" EN 837
M20x1.5



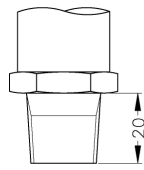
G1/4" DIN 3852
M10x1; M12x1; M12x1,5
(up to 100 bar)



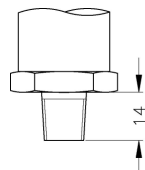
G1/4" EN 837



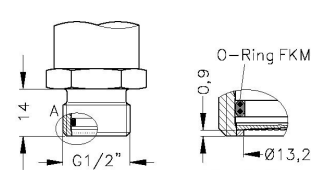
G1/2" DIN 3852
M20x1.5



1/2" NPT



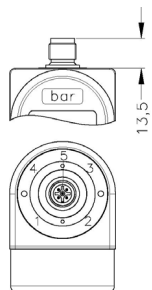
1/4" NPT



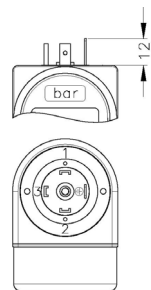
G1/2" flush (DIN 3852)⁷
(up to 40 bar)

- ⇒ With pressure ranges $P_N > 40$ bar total length increases by 14 mm!
- ⇒ With Ex-protection total length increases by 20 mm!

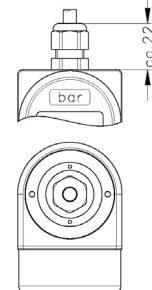
Electrical connection



M12x1 5-pin



DIN 43650⁴



Cable gland⁸

⁷ not possible for vacuum ranges

⁸ different cable types and lengths available; standard: 2 m PVC cable (without ventilation tube), optionally cable with ventilation tube

TECHNICAL DATA

Materials	
Pressure port	stainless steel 1.4571 (316Ti)
Housing	stainless steel 1.4301 (304)
Display housing	PA 6.6, Polycarbonate
Seals (media wetted)	standard: $P_N \leq 40$ bar: FKM / $P_N > 40$ bar: NBR option: welded version for pressure ports according to EN 837 with pressure ranges P_N between 0.25 bar and 40 bar others on request
Diaphragm	stainless steel 1.4435 (316L)
Media wetted parts	pressure port, seals, diaphragm

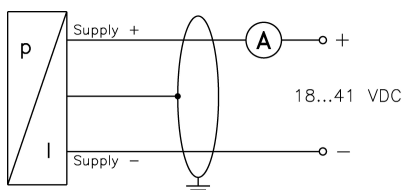
Miscellaneous	
Current consumption (without contacts)	signal output current: max. 25 mA signal output voltage: max. 18 mA
Weight	ca. 160 g
Installation position	any ⁹
Operational life	$> 100 \times 10^6$ cycles
Ingress protection	IP 65

Pin configuration					
Electrical connection		M12x1 plastic (5-pin)	M12x1 metal (5-pin)	DIN 43650	cable colours (DIN 47100)
2-wire-system	Supply +	1	1	1	white
	Supply -	3	3	2	brown
	Contact 1	4	4	3	grey
	Contact 2	5	5	-	pink
	Ground	via pressure port	plug housing	ground contact	yellow / green (shield)
3-wire-system	Supply+	1	1	1	white
	Supply -	3	3	2	brown
	Signal +	2	2	3	green
	Contact 1	4	4	-	grey
	Contact 2	5	5	-	pink
	Ground	via pressure port	plug housing	ground contact	yellow / green (shield)

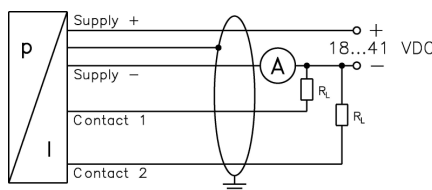
Wiring diagrams

2-wire-system (current) (for Ex-protection: supply $V_s = 17 \dots 28 V_{DC}$; max. 1 contact possible)

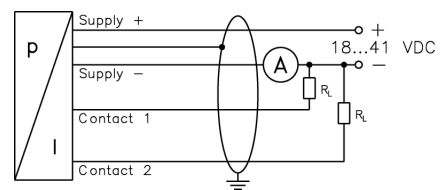
without contact



1 contact

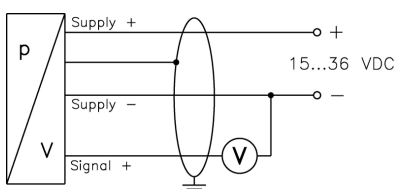


2 contacts

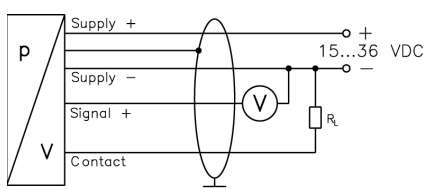


3-wire-system (voltage)

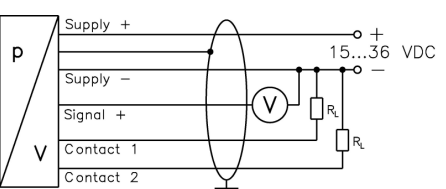
without contact



1 contact



2 contacts



⁹ Pressure transmitters are calibrated in a vertical position with the pressure connection down. If this position is changed on installation there can be slight deviations in the zero point for pressure ranges $P_N < 1$ bar.

This data sheet contains product specification, properties are not guaranteed. Subject to change without notice.