



# CIT 600

## Multichannel Process Display LCD



### Functional range

- ▶ data and configuration transfer via RS-485
- ▶ adjustable contrast and illumination of the display
- ▶ programmable display filter
- ▶ parameterizable under-run and exceeding range alarms
- ▶ sample rates from 0.125 sec up to 5 min selectable
- ▶ including software for parameterization display and archiving of the measured values

### Product characteristics

- ▶ 2, 4 or 8 input ports
- ▶ input signal: 0/4 ... 20 mA
- ▶ graphics-capable LC display
- ▶ transducer supply 24 V<sub>DC</sub>
- ▶ communication interface RS-485 (Modbus RTU)
- ▶ front panel housing 96 x 96 mm

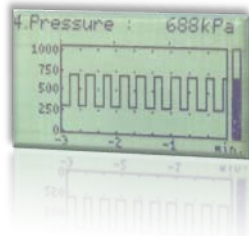
### Optional versions

- ▶ input signal PT100 / PT500 / PT1000
- ▶ lockable door

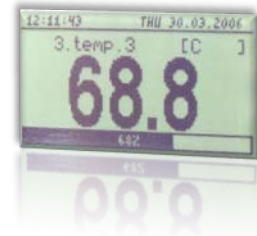
### Display modes



- ▶ simultaneous display of max. 8 ports with scalable measured value and unit or standardized measured value and bargraph



- ▶ online course display of one port in the diagram with scalable measured value, bargraph and unit (timeline of the measured value course from 12 sec up to 8 h scalable)



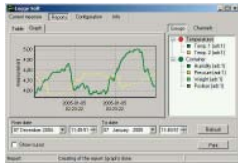
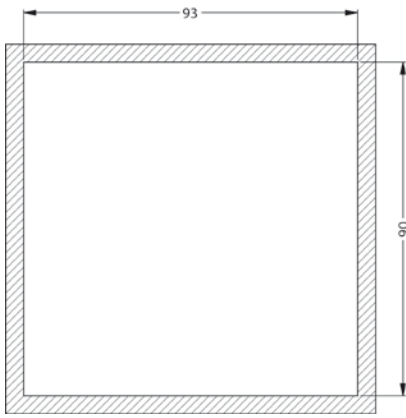
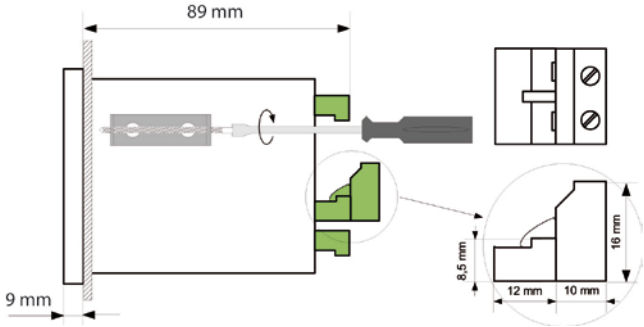
- ▶ single port display with scalable and standardized measured value, bargraph and unit



# CIT 600

Multichannel Display

Technical Data

<b>Supply</b>	
Supply voltage	standard: 85 ... 260 V <sub>AC</sub> or V <sub>DC</sub> option: 16 ... 35 V <sub>AC</sub> / 19 ... 50 V <sub>DC</sub>
Power consumption	7 VA, max. 12 VA
<b>Signal input</b>	
Number	2, 4 or 8 inputs
Input signal	standard: 0/4 ... 20 mA option: PT100 / PT500 / PT1000
Measuring range	current inputs: ± 9999 temperature inputs: -100 ... 600 °C
<b>Transmitter supply</b>	
DC	current inputs: 24 V <sub>DC</sub> ± 5% max. 200 mA temperature inputs: max. 50 mA
<b>Communication / Performance</b>	
Communication interface	RS-485 (Modbus RTU, galvanically separated)
Transmission speed	1200 - 115200 bit/sec.
<b>Permissible temperatures</b>	
Operating temperature	0 ... 50 °C
Storage temperature	-10 ... 70 °C
<b>Electrical protection</b>	
Electrical safety	EN 61010-1
EMC	EN 61326
<b>Miscellaneous</b>	
Type of protection	IP 65 (front foil)
Display	LCD, 128 x 64 points, with backlight
Accuracy (25 °C)	± 0.1 % FSO      tolerance band (0 ... 50 °C): max. 0.25 % FSO
Housing dimensions	96 x 96 x 98 mm
Housing / housing material	panel / NORYL-GFN2S E1
<b>Software</b>	
Setup-600	 <p>The Software Setup-600 enables the complete configuration of the CIT 600 via PC. The data transfer is done by the RS 485-interface of the CIT 600 or a connected converter.</p>
<b>Mechanical connection (dimensions in mm)</b>	
 <p>mounting hole dimensions</p>	 <p>dimensions of brackets and connectors</p>
<b>Special version</b>	
Lockable, transparent door	
<b>Accessoires</b>	
Converter RS 485 / USB	
Converter RS 485 / RS 232	



## Ordering code CIT 600

**CIT 600** -  -  -  -  -

<b>Version</b>				
2 analogue input signals	2			
4 analogue input signals	4			
8 analogue input signals	8			
<b>Input type</b>				
0/4 ... 20 mA, 0/1 ... 5 V, 0/2 ... 10 V	1			
PT100, PT500, PT1000	2			
<b>Supply</b>				
standard: 85 ... 260 V <sub>AC</sub> / V <sub>DC</sub>	1			
16 ... 35 V <sub>AC</sub> / 19 ... 50 V <sub>DC</sub>	2			
<b>Display foil</b>				
neutral		1 0 0		
customer		9 9 9		consult
<b>Special version</b>				
standard			0 0 0	
lockable, transparent door			A 0 1	
customer			9 9 9	consult